



Alumni Registration & Updates

The Department of Civil and Environmental Engineering is always interested in how our alumni are doing. We hope you will take time to send your updates to jmueller@lsu.edu or, if you prefer, you can "snail mail" them to

**Department of Civil and Environmental Engineering
Louisiana State University
3418 Patrick Taylor Hall
Baton Rouge, LA 70803-6405**

Please include basic information such as your full name, year of graduation, degree, mailing address, email address, telephone number, company, and your title/position. For your update, please include information on your recent professional and personal developments, along with a high-quality photo if available.



Volume 10 Spring Issue April 2010



Civil and Environmental Engineering
Louisiana State University
3418 Patrick Taylor Hall
Baton Rouge, LA 70803-6405

ADDRESS SERVICE REQUESTED

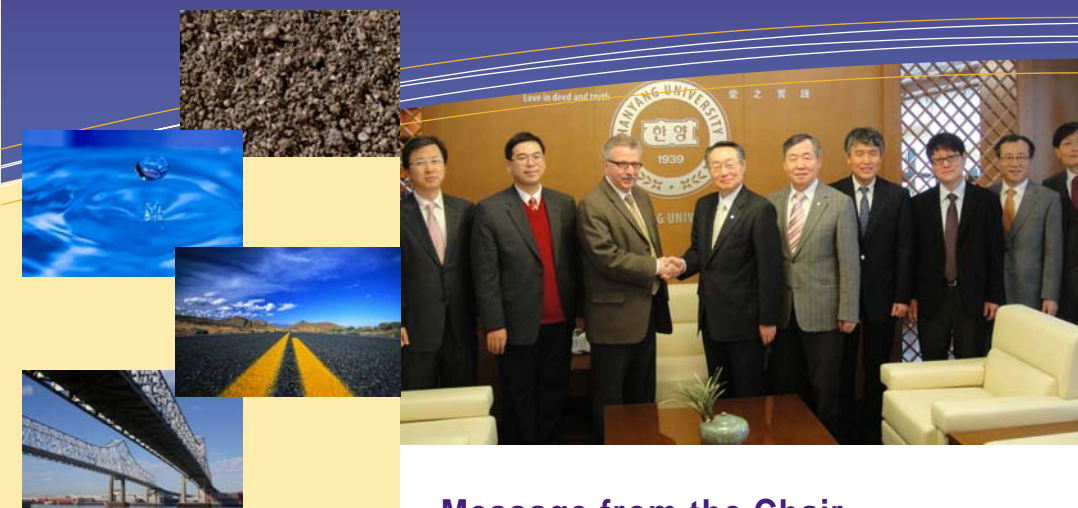
Non-Profit Org
U.S. Postage
PAID
Permit No. 733
Baton Rouge,
LA

Department of Civil and Environmental Engineering

Volume 10

Spring Issue

April 2010



this issue

- ASCE Student Chapter P.2
- Fall 2009 Commencement P.3
- Forever LSU Campaign Updates P.6
- Engineering Extravaganza P. 8
- Alumni Corner P. 11

Louisiana State University and Hanyang University

Recognizing the value of research and education interchange and the benefits of collaboration, Hanyang University, Seoul, Republic of Korea, and Louisiana State University Agricultural and Mechanical College signed recently a Memorandum of Understanding, a commitment to cooperation and the development of cooperative scientific and educational programs in Civil and Environmental Engineering.

Pictured above are Dr. George Z. Voyiadjis of Louisiana State University (third from left) shaking hands with President of Hanyang University Dr. Chong Yang Kim.

Message from the Chair

Welcome to another edition of the Department of Civil and Environmental Engineering newsletter. First, I am pleased to announce to you the recent success of our ASCE Student Chapter at the regional competitions in March. The Steel Bridge team placed first overall and the Concrete Canoe team placed second overall. The full details of the competition can be found in the Student News section. Please join us in congratulating the Student Chapter for their hard work and success. We recently got word that the Steel Bridge team has been invited to the 2010 National Student Steel Bridge Competition to be held May 28-29 at Purdue University. We wish the team the best of luck for this national competition.

This year, LSU is celebrating its 150th year of education excellence with the Sesquicentennial, year-long celebration. Events have been taking place on campus

since January and will continue throughout the year. We encourage all of our faculty, staff, students and alumni to join in the celebration. Information about scheduled events can be found at www.lsu.edu/lsu150. Of special note to friends of the College of Engineering, COE is hosting an Engineering Extravaganza on LSU Day, April 24th. Details of this event can be found in this issue. On LSU Day, events for all age groups will be held all over campus and we hope that you and your family will come out and join us in the celebration. And, while you are here, be sure to stop by Patrick F. Taylor Hall and check out the Engineering Extravaganza!

Also, we are in the home stretch for the Forever LSU Campaign. This campaign will conclude at the end of 2010 and we need your help in surpassing our goal of \$4 million—we are very close! We sincerely thank each and every

one of you who have contributed to this vital effort. Some of the recent contributions are highlighted in this issue in the Campaign Update article. For those who have not yet participated, we urge you to consider a contribution. No matter the size, all gifts are greatly appreciated and will help us to reach our goal.

During these stressful economic times, higher education has had to withstand several budget cuts, with more to come, as you may know. Your continued involvement with the Department as well as your support is important now more than ever and will help us to maintain our current level of excellence and to continue on our path of success.

Best Regards,
Dr. George Z. Voyiadjis
*Boyd Professor, Chair
And Bingham C. Stewart
Distinguished Professor*



Student Highlights

John Voltz, an undergraduate student in CE, and **Hana H. Naghawi**, a Ph.D. CE graduate student, were both selected as recipients of a Deep South Institute of Transportation Engineers Scholarship for 2010.

Civil engineering sophomore **Brian Carrington II** has been awarded the status of Torchbearer in the National Society of Black Engineers (NSBE)'s Academic Pyramid of Excellence program. This distinction requires a 3.2 to 3.59 GPA, along with membership in the organization. Recognition at the NSBE Fall Regional Conference (as well as a reception at the NSBE National Convention), reserved seats at the Golden Touch Awards and VIP access to the Career Fair at the National Convention serve as benefits of this award.

Student News



From left to right Andrew Windmann, Jessica Shambra, Greg France, Thomas Montz (in back), Ashleigh Williamson, James Parker, Sarah Laakso, Josh Porter, Mark Dunn, David Ziegler, David Craft, Chris Sciortino, Kristi Acuff

ASCE Student Chapter Success at Regionals

Over this past spring semester, the ASCE student chapter at LSU actively prepared for and participated in the concrete canoe and steel bridge competitions.

The LSU-ASCE student chapter has been really busy preparing for Deep South Regional Conference at UNO that was on March 26-27. The Concrete Canoe team spent much time preparing the canoe for the competition. The relatively lightweight canoe weighs in at an estimated 310 lbs, and is reinforced with 4-oz. fiberglass mesh. The team was very excited to race in the lake in City Park, New Orleans! The Canoe Team placed first in the final product category, second in the Oral Presentation, first in men's sprint, second in women's sprint, and third in co-ed sprint. The concrete canoe team also placed second overall. The Canoe Team members are, Andrew Windmann, James Parker, Sarah Laakso, Greg France, Jessica Shambra, Thomas Montz, and Chris Rome. The team captain is Maria George and co-captain is Ashleigh Williamson.

The Steel Bridge team has also been preparing for the regional competition. After months of fabrication, the steel bridge is finally complete. The team has returning members Josh Porter and David Craft,

along with new members David Ziegler, Kristi Acuff, and Chris Sciortino. The team captain is Mark Dunn. Between the experience from team members on last year's team, and work put in by the new members involved, the team believes they have constructed one of the best steel bridges at LSU in recent years. The steel bridge team placed first in stiffness, efficiency, construction speed, and second in efficiency. They also placed first overall in the competition. They will be attending the national competition in West Lafayette, Indiana at Purdue University on May 28th and 29th. Their sponsors are Prospect Steel Company, Evans-Graves Engineers, Inc., ABMB Engineers, Inc., CSRS, Schrenk and Peterson Consulting Engineers, GEC, SJB Group, GeoEngineers.

LSU also placed first overall for the whole conference. For the first time this year ASCE-LSU will have a team competing in the Environmental Competition, which is an onsite wastewater treatment. The participants were Melissa Young, Heather Smith, Justin Wagner, and Kresten Brown.

Please join us in congratulating the ASCE student chapter on their success.

CEE Grad First Woman to Serve as Louisiana's Transportation Chief

Civil Engineering graduate Sherri LeBas was named interim secretary for the Louisiana Department of Transportation and Development (DOTD)

Sherri LeBas earned a bachelor's degree in civil engineering from LSU in 1985. She is a licensed professional engineer and has worked for the Louisiana Department of Transportation Development for 18 years.

In a recent article in Baton Rouge's *The Advocate* newspaper, LeBas stated that Initially she planned to study pharmacy but a class in environmental studies sparked her interest in professions related to the environment. A search through the catalog led her to civil engineering

Call for Pictures and Memorabilia

In celebration of the LSU Sesquicentennial, the Department of Civil and Environmental Engineering would like to ask that alumni, former faculty/staff and friends of the department consider sharing with us your pictures and memorabilia of the CEE department.

We are searching for old pictures, printed material, etc. that can serve as a rich visual history of the CEE

and proved to be a wise choice, leading to a very successful career with DOTD that began in 1985.

Only a year after joining the agency and very early in her career as an engineer, LeBas began working for the road design section and was quickly chosen to manage part of a major road project in Shreveport. Since then, LeBas has established herself at DOTD and over the years has held several titles. (such as interim secretary, acting chief engineer and assistant to the secretary for policy). LeBas' appointment as interim secretary for DOTD will end in June.

In a field that is primarily male dominated, LeBas' achievements are especially significant and inspirational to women considering the field of engineering.

Department. Any and all contributions would be greatly appreciated. Scanned, high resolution pictures can be emailed to Julie Mueller at jmueller@lsu.edu. If you would like to donate a picture or memorabilia, please mail to:

Department of Civil and Environmental Engineering
Louisiana State University
Attn: Julie Mueller
3418 Patrick F. Taylor Hall
Baton Rouge, LA 70803

Alumni Corner



EXPERIENCE YOUR UNIVERSITY

Saturday, April 24
10 a.m. - 4 p.m.

JOIN US for a FREE, FUN-FILLED DAY of interactive EXPLORATION throughout campus.

Take a walk through the **HUMAN BODY**; learn the art of **STAGE COMBAT**; visit a **PETTING ZOO**; try your hand at **FIREFIGHTING**; meet **LOCAL AUTHORS**; learn how to spell your name in **CHINESE**; plant a tree for **COASTAL RESTORATION**; and **MORE THAN 150 OTHER EXPERIENCES!**

Events are subject to change. Check out www.LSUDAY.com for the most up-to-date information.



ACTIVITIES FOR ALL AGES!

www.LSUDAY.com

SPONSORS

LSU Day is part of the LSU sesquicentennial celebration and is made possible through donations from:



Central Gulf of Mexico Hurricane Conference Held at LSU

The Central Gulf of Mexico Hurricane Conference was held here at LSU on May 16th and 17th at the Lod Cook Alumni Center.

Speakers and more than 100 attendees attended this two-day conference on the LSU campus which highlighted the topic of storm surge science and included information on hurricane preparedness, forecasting of storms, coastal inundation, communication during storms, and the future of Louisiana's coast

line. The conference brought together scientists, weather experts, emergency managers, public officials, and local media to discuss these topics before the start of the 2010 hurricane season (officially June 1st).

With an estimated one-third of Louisiana's population living at or below sea level and with the almost certain continuation of Louisiana's rapid loss of coast line, storm surge and other hurricane-related topics effect most if not all of Louisiana residents. Louisiana's unique situa-

tion in regards to current sea level, rapidly subsiding land and the coastal issues we face require specific research for our area. The valuable research being done here at Louisiana State University and the LSU Hurricane Center, though useful elsewhere, is especially pertinent right here in our own back yard.

This conference was sponsored by the Center for Geoinformatics (C4G), the National Oceanic and Atmospheric Administration (NOAA), Shaw, LSRC and Louisiana State University.

Dr. W. David Constant Named Dean of Graduate School



Dr. W. David Constant, Humphreys T. Turner Professor of Civil and Environmental Engineering, has been named dean of the LSU Graduate School, pending approval by the LSU Board of Supervisors.

Dr. Constant has more than 30 years of experience at LSU. He received his bachelor's, master's and Ph.D. degrees in chemical engineering from LSU and then joined the LSU faculty as an assistant professor in 1984. An outstanding career elevated him to full professor and over the years Dr. Constant has taught in petroleum, chemical and civil and environmental engineering departments here on campus.

Dr. Constant has been serving as interim dean of the Graduate School since May 2009. Prior to his interim position with the Graduate School, he also served as associate dean and interim dean of the College of Engineering. Director of the Hazardous Waste Research Center at LSU, Director of the US Geological Survey Louisiana Water Resources Research Institute at LSU, Acting Director of the Remote Sensing and Image Processing Lab & Institute for Recyclable Materials and Coordinator for the Environmental Engineering program are all part of his long list of accomplishments here on campus.

committee included Dr. Clinton Willson (Civil and Environmental Engineering), Dr. Karsten Thompson (Chemical Engineering), Dr. Les Butler (Chemistry), and Dr. Jeffrey Nunn (Geology).

Workshop objectives were to bring forth research on geomaterials that utilizes the imaging capabilities of computed tomography, to facilitate presentations of leading edge research in a wide array of geologic disciplines and to further understanding on the applications and uses of computed tomography within the geosciences.

The planning committee would like to thank all of those who attended.

LSU Hosts GeoX2010

GeoX2010, an exchange forum to discuss the latest advances and developments in the applications of x-ray computed tomography and neutron tomography, was held February 28 thru March 3 in New Orleans, Louisiana.

Participants included international researchers from academia, US Federal Laboratories, industry, government, private industry, and program managers from agencies such as NSF, DOE, and ONR. This workshop was co-chaired by Dr. Khalid Alshibli, Associated Professor in the Department of Civil and Environmental Engineering, and was sponsored by Louisiana State University, US Naval Research Laboratory, National Science Foundation, Skyscan and Xradia. Members of the organizing

Fall 2009 Commencement



The Department of Civil and Environmental Engineering would like to congratulate **Rhett Michael Bouquet** (pictured left) on receiving the **University Medal**. At each commencement, the University Medal for "Highest Academic Achievement" is awarded to the undergraduate student (or students) graduating with the highest grade point average.

In addition, undergraduate students may receive their degrees *summa cum laude*, *magna cum laude*, or *cum laude*. The determination for these designations is also based on the student's grade point average. Please join us in congratulating the following students for their accomplishment:

Suma Cum Laude	Magna Cum Laude	Cum Laude
Rhett Michael Bouquet	Kyle Joseph Galloway	Michelle Denise Hebert
	Thomas Jude Montz Jr.	Valerie Suzanne Mautz
	Florence Elise Trappey	

Also, the University recognizes students who have met the high standard set by faculty members from every college at LSU and by the Communication across the Curriculum Program. These recipients of the **LSU Distinguished Communicator** certification, created in 2006 and the first certification of its kind in the nation, are outstanding in four areas of communication: written, spoken, visual and technological. The following Civil Engineering students are recipients of this certification:

- Ayokunle T. Adeyemi, *BSCE, Civil Engineering* (Roy Paul Daniels Distinguished Professor Associate Professor Brian Wolshon)
- Joshua D. Board, *BSCE, Civil Engineering* (Instructor Carolyn Y. Jacobs)
- David M. Brasset, *BSCE, Civil Engineering* (Chevron Professor of Engineering and Edwin B. and Norma S. McNeil Distinguished)

BS in Civil Engineering			MS in Civil Engineering
Brad Michael Adams	Kyle Joseph Galloway	Danny LeRoy Rick Jr.	Ryan Christopher Hedlund
Ayodeji Thompson Adeyemi	Daniel Gregory Gross	Trent Nicholas Salter	Benjamin Joseph Malbrough
Ayokunle Thomas Adeyemi	Ryan Christopher Guedry	Justin Paul Schexnayder	Dev Raj Pokhrel
Jake Newton Alford	David Ryan Hattaway	Steven Eugene Schorr	Gael Benoit Louis-Philippe Souci
Joshua David Board	Michelle Denise Hebert	Yeimi Soler	
Jacques Pierre Boudreaux	Andrew James Judice	Brad Keith Taylor	
Rhett Michael Bowman	Valerie Suzanne Mautz	Florence Elise Trappey	PhD in Civil Engineering
Seth Michael Bradley	Thomas Jude Montz, Jr.	Taylor Wade Van Nortwick	Edmond Joseph Russo Jr.
David Michael Brasset	Christopher Michael Moreau	Shawn Robert Wingrove	Zhongxin Wei
Matthew Jared Davis	Terry Naidoo	Rachael Leigh Young	
Matthew Samuel Estopinal	Stephen Patrick Picard	Mohammed Zaheer	
Joseph Marcel Fournet	Joshua Paul Plaisance		
	Jennifer LeeAnn Richmond		



Celebrating 150 Years of Excellence

Louisiana State University has kicked off a year of festivities to celebrate its 150th year.

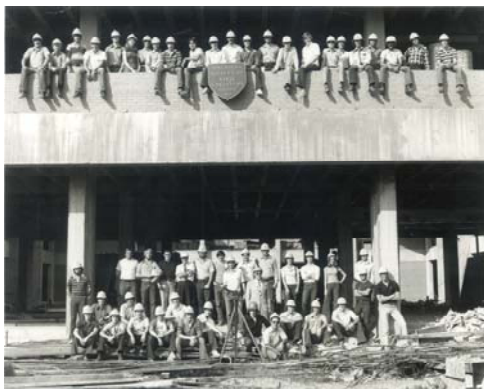
The LSU Sesquicentennial Celebration kicked off on January 19th as students, faculty, staff and friends of the university joined together at the LSU Memorial Tower to launce the celebration with cake. Only one of many events scheduled during the year-long celebration, all are encouraged to join in the festivities that will take place in 2010. For a full list of scheduled events, visit the LSU Sesquicentennial website at <http://www.lsu.edu/lsu150>

On April 24th, the entire university will join together for LSU Day. On this day, the University will open its doors to the public for a "free, fun-filled day of exploration and discovery, highlighted by performing arts showcases, tours, and exhibitions..." The day's events will

be held all over campus, but primarily in the Quadrangle (by Middleton Library) and the Parade Grounds.

On LSU Day, the College of Engineering will host an "Engineering Extravaganza: Engineering Transforms Lives". During this event, the faculty, staff, alumni, and student body of the College of Engineering will demonstrate various engineering fields with hands-on activities, student projects, and presentations. This event will take place in the lobby of Patrick F. Taylor Hall (formerly known as CEBA) and in the building's courtyards. Please join us for a fun-filled day!

LSU Day is made possible through donations from: AT&T, BlueCross BlueShield of Louisiana, Campus Federal, Raising Cane's, Coca-Cola, Entergy, and ExxonMobil. For more information, visit <http://www.lsuaday.com>

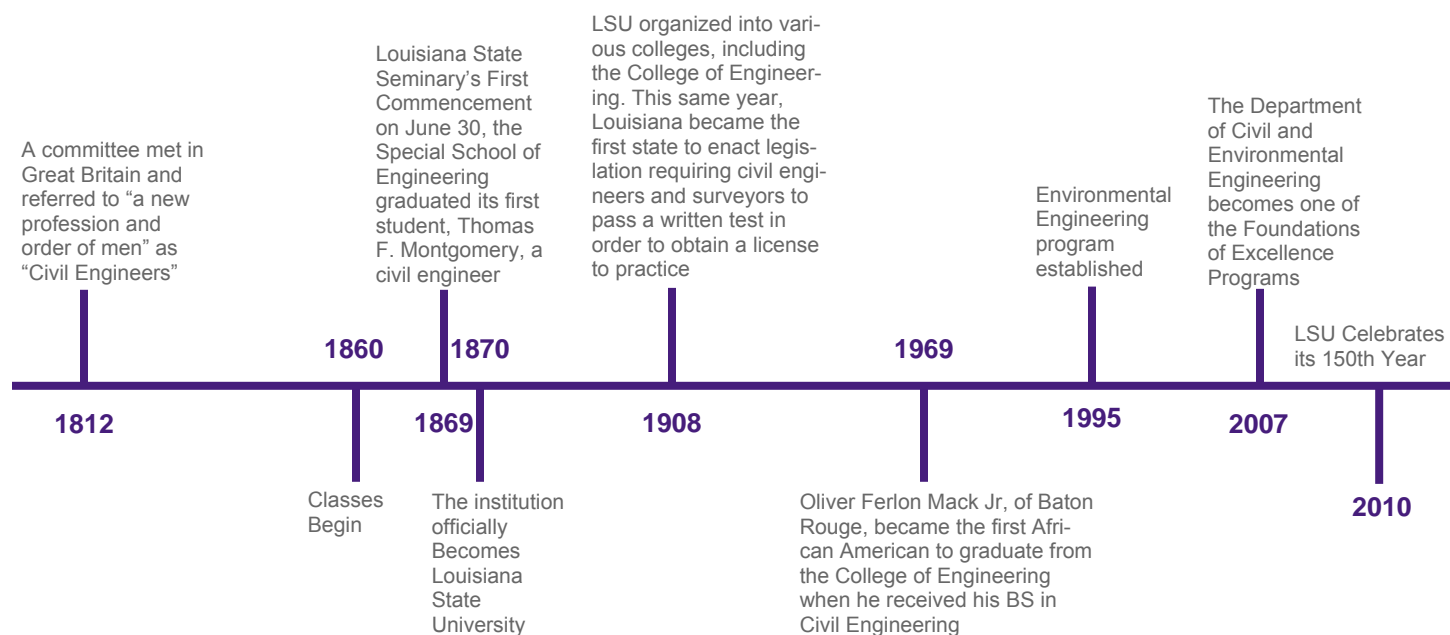


ASCE Student Chapter 1977 (photo courtesy of Mr. Ron Rodi)



ASCE Student Chapter Concrete Canoe Races 1981 (photo courtesy of Mrs. Ann Forte Trappey)

The Rich History of CEE



Dr. Okeil received a Pilot Funding for New Research (Pfund) Grant from Louisiana Board of Regents to conduct a study titled "Improving the Sustainability of Bridges". The research looks into developing new methodologies for extending the service life of existing steel bridges. Experimental and analytical investigations will be conducted in the CEE Dept by one graduate student who will be assisted by an undergraduate student helper. \$10,000

Dr. Okeil has been appointed to a two-year position on the editorial board of the ASCE Journal of Composites for Construction (JCC). The JCC is a leader in publishing original peer-reviewed research papers, review papers, and case studies about composite materials consisting of continuous synthetic fibers and matrices for use in civil engineering infrastructure systems.



Dr. Mehmet T. Tumay, Georgia Gulf Distinguished Professor Emeritus in the Department of Civil and Environmental Engineering, was recently nominated and selected to the Academy of Geo-Professionals (AGP) as a Diplomate of Geotechnical Engineering (D.GE) and was inducted on November 2, 2009 at the American Society of Civil Engineers' Geo-Institute Conference in Hershey, Pennsylvania. The Academy of Geo-Professionals' (<http://www.geoprofessionals.org>) goal in establishing the "Diplomate" certification is to improve the practice, elevating the standards, and advancing the profession. We congratulate Dr. Tumay on his accomplishment.



Clifford J. Mugnier has been named a 2010 American Society for Photogrammetry and Remote Sensing (ASPRS) Fellow Award winner. The ASPRS designation of Fellow is conferred on active Society members who have performed exceptional service in advancing the science and use of the mapping sciences (photogrammetry, remote sensing, surveying, geographic information systems, and related disciplines). The designation of Fellow is awarded for professional excellence and for service to the Society. Candidates are nominated by other active members, recommended to the Fellows Committee, and elected by the ASPRS Board of Directors. Up to 0.3 percent of the Society's active members may be elected as Fellows in any one year. The nominees must have made outstanding contributions in a recognized Society specialization whether in practice, research, development, administration, or education in the mapping sciences. This year's awards will be given in April at the ASPRS 2010 Annual Conference in San Diego, California.



Dr. Steve C.S. Cai, Ph.D., P.E., Associate Professor in Civil and Environmental Engineering has been elected Fellow of American Society of Civil Engineers (ASCE), effectively Jan. 19, 2010. Dr. Cai's expertise is structural and bridge infrastructure. Before Dr. Cai joined LSU in 2001, he worked for consulting firm, state government, and other institute for eight years in US, in addition to a few years as instructor in China. ASCE is the largest association in civil engineering in the world. Based on ASCE website "Fellows are practitioners, educators, mentors, and most of all leaders. They have distinguished careers that have contributed significantly to the Civil Engineering profession. The accomplishments of Fellows have left their marks on their communities, society, and future engineering professionals."

Dr. Steve C.S. Cai, Ph.D., P.E., Associate Professor in Civil and Environmental Engineering, is co-chairing an international conference "International Symposium on Life-cycle Performance of Bridges and Structures" that will be held on June 27-29, 2010, Changsha, China. The main scope of the conference focuses on bridge structures, covering the life-cycle performance of bridges, namely from design, to construction, to service, to extreme events, and to next generation of bridges. Please see more details at <http://www.csust.edu.cn/ISLPBS/eindex.html>



Dr. Deng received a new education award from National Aeronautics and Space Administration (NASA) for promoting the application of satellite remote sensing-based emerging technology in Civil and Environmental Engineering with emphasis on watershed-scale water quality monitoring and management. This 2-year project will provide research training and summer internship opportunities for civil and environmental engineering undergraduates.

Campaign Update

Forever LSU “The Campaign for Louisiana State University” is the largest, most ambitious fundraising campaign in the school’s history.

The campaign supports the National Flagship Agenda, which is intended to position LSU, including the LSU Ag Center and LSU Law Center, as one of the leading public institutions in the nation. This campaign will conclude at the end of 2010, coinciding with LSU’s Sesquicentennial Celebration.

Recent Campaign Highlights

Here are a few highlights of recent campaign contributions of CEE’s alumni and friends. Each and every contribution is appreciated, and we hope that these highlights will encourage others to join us in this vital campaign.

- Evans-Graves Engineers Inc. (John A. Graves) contributed to the CEE Enrichment Fund
- PBS&J Foundation and many charitable people contributed to the Erin K. Lahr Scholarship
- Robert “Bob” Deason contributed to the CEE Enrichment Fund
- Wm. Clifford Smith contributed to the Chester P. Siess Fund and the CEE Enrichment Fund
- SJB Group contributed to the CEE Enrichment Fund, the ASCE Steel Bridge Team and the Chester P. Siess Fund

Matching Gifts

ExxonMobil made significant contributions to the LSU Department of Civil and Environmental Engineering (CEE) in 2009 when, thanks to its generous three-to-one matching gift program, the company donated \$56,117.14 for the calendar year. We would like to express our sincere thanks to ExxonMobil and to all their employees, past and present, who are helping to maintain and improve CEE.

Matching funds are allocated to the areas specified by the individual donor. Most of this year’s funds went to the Lloyd J. Guillory, Jr. Profes-

sorship in Civil Engineering. The other matching funds went to the CEE Enrichment Fund, where they were put to use right away supporting programs, supplying equipment, and helping undergraduate and graduate students. Participants in ExxonMobil’s Educational Matching Gift Program include current employees, retirees/annuitants and surviving spouses of former employees, as well as company directors.

Matching gifts from the Boh Foundation, BP America, the Fluor Foundation, Georgia Gulf, Marathon Oil, and the Penn Virginia Corporation collectively contributed another \$3,750 to the Department this calendar year. Several corporations also donated other funds in addition to their corporate match.

Our thanks to all the companies that provide matching gift incentives to their employees! Your generosity increases the impact of the generosity of our alumni and friends.

Campaign Wrap Up

The fundraising goal for the Department of Civil and Environmental Engineering is \$4 million with a stretch goal of \$8 million. A primary goal of CEE in the campaign has been to secure a gift(s) to name the department at \$10 million.

Since the start of the campaign, CEE has worked through the Campaign Steering Committee (CSC) to engage alumni and friends of the department in the campaign process. We have made steady progress towards our goals and, with your help, we can achieve them. If you and/or your company have not yet participated, we encourage you to consider helping us to wrap up this final year of the campaign. There are many options at all levels and in a variety of areas. Gifts may be spread out over more than one year, if needed.

How can you help? Any and all contributions are welcomed and help us to reach our campaign goals. We encourage you to connect with our donor investment advisor, Don Eisenberg (eisenberg@lsu.edu; 225-578-2441), to discuss the different options for participating in this vital campaign.

Professorship Honors Engineering Alumnus Mike Dooley



Don Eisenberg, Associate Director of Development, LSU, Warren Wagenspack, Ph.D., Associate Dean for Academic Programs, College of Engineering, LSU), Michael Dooley, Director, Sigma Consulting Group, Inc., Miles Williams, President, Sigma Consulting Group, Inc., Greg Sepeda, Vice President and Chief Engineer, Sigma Consulting Group, Inc.

The Forever LSU campaign and the LSU College of Engineering recently announced a pledge from Sigma Consulting Group, Inc. to establish the Mike Dooley, P.E., Professorship in Civil and Environmental Engineering (CEE).

The endowment will be used to support professors and promote both undergraduate and graduate studies in CEE, an essential component to help find effective solutions for problems currently faced in the State of Louisiana.

According to Sigma’s President, Miles Williams, P.E., “The folks at Sigma are thrilled to be able to honor our founder, Mike Dooley, by establishing this endowed professorship. Many things that Mike has passed along to our staff is a sense of commitment to our community and especially to the young people that are about to enter our profession. A big part of Mike’s legacy here at Sigma is evidenced by the amount of time and effort our staff commit to the Civil and Environmental Engineering Department at LSU. It is only fitting we give back in Mike’s name a lasting legacy that recognizes his endeavors.”

CEE alumnus Mike Dooley (BS 1974) has an extensive connection with LSU, first with his years as a student-athlete culminating in being named an All-SEC Diver and captain of the swimming team in 1973. Dooley has remained committed to his alma mater; specifically to the CEE Department. He served as an adjunct instructor for several years and was instrumental in establishing and chairing the CEE Program Advisory Committee. This committee facilitates interaction between the faculty and practicing engineers which ultimately leads to a more practical and diverse curriculum for the students.

Dooley began his engineering career at the Louisiana Department of Transportation and Development as a Bridge Design Engineer and then a Field Project Engineer. He then worked for several consultants before establishing Sigma in 1987. Dooley also earned a Masters of Business Administration from Arizona State in 1981.

“Private support such as this is crucial for the future of the Civil and Environmental Engineering (CEE) Department at LSU,” said Dr. George Z. Voyiadjis, Boyd Professor and Chair of the CEE Department. “Mike Dooley has exemplified the ideal CEE alumnus through his involvement with and support of the Department for many years. We commend Miles Williams and the Sigma Consulting Group for making this outstanding gift, and for honoring Mike Dooley in the process. We hope that this will challenge other alumni, friends and companies to join us in assuring the successful completion of our CEE part of the Forever LSU Campaign this year, for the benefit of our students.”

The professorship is pledged for \$60,000, and will qualify for an eventual state match of \$40,000. For more information on how you, too, can make a difference and help transform lives, please contact the LSU College of Engineering Office of Development at 225/578-7373.

Article by Mimi LaValle, LSU College of Engineering, 225-578-5706, mlavall@lsu.edu