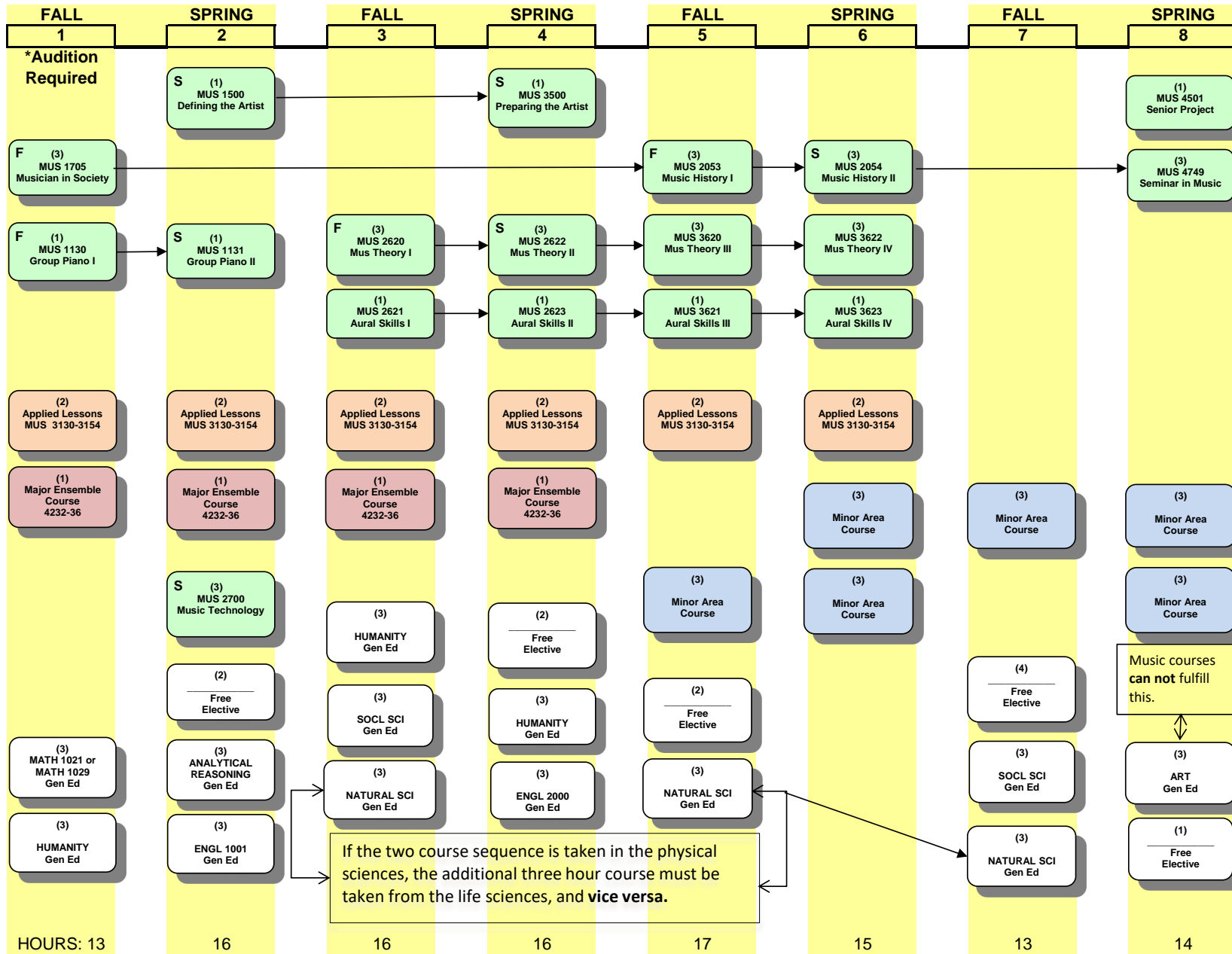


2020-2021
 WITHOUT CONCENTRATION
 C OR BETTER IN MUSIC COURSES
 TOTAL SEMESTER HOURS = 120

BA MUSIC WITHOUT CONCENTRATION

College of Music & Dramatic
 Arts



Flowchart Legend
 F Course taught in fall only
 S Course taught in spring only
 → Credit required